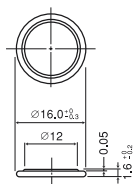


MANGANESE DIOXIDE LITHIUM BATTERIES (CR SERIES)

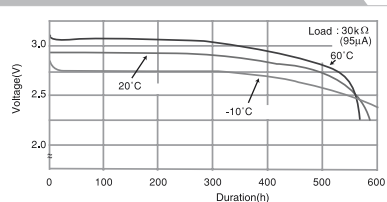
CR-1616



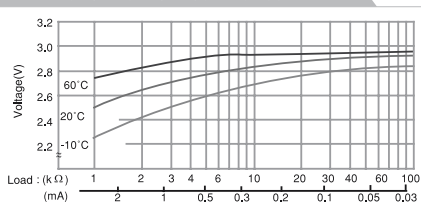
SPECIFICATIONS

Name	CR-1616
Nominal voltage (V)	3
Nominal capacity (mAh)	55
Continuous drain (mA)	0.1
Operating temperature (°C)	-30 to +60
Weight (g)	1.2

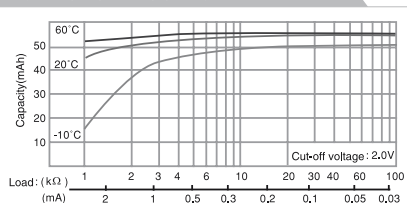
DISCHARGE TEMPERATURE CHARACTERISTICS



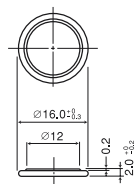
OPERATING VOLTAGE VS. DISCHARGE CURRENT*



CAPACITY VS. LOAD RESISTANCE



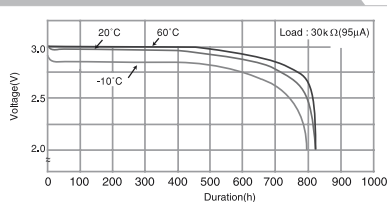
CR-1620



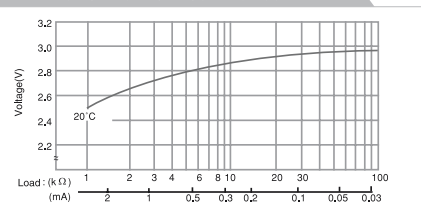
SPECIFICATIONS

Name	CR-1620
Nominal voltage (V)	3
Nominal capacity (mAh)	75
Continuous drain (mA)	0.1
Operating temperature (°C)	-30 to +60
Weight (g)	1.3

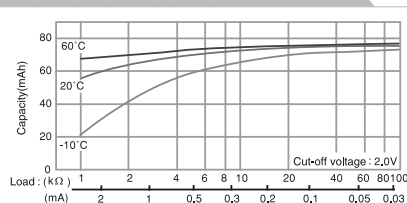
DISCHARGE TEMPERATURE CHARACTERISTICS



OPERATING VOLTAGE VS. DISCHARGE CURRENT*

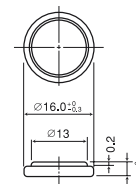


CAPACITY VS. LOAD RESISTANCE



MANGANESE DIOXIDE LITHIUM BATTERIES (CR SERIES)

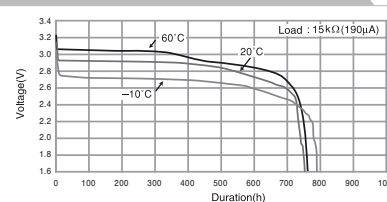
CR-1632



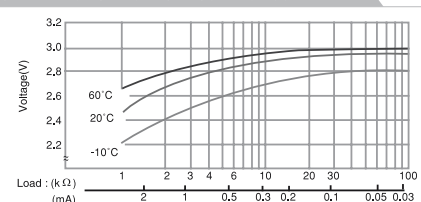
SPECIFICATIONS

Name	CR-1632
Nominal voltage (V)	3
Nominal capacity (mAh)	140
Continuous drain (mA)	0.1
Operating temperature (°C)	-30 to +60
Weight (g)	1.8

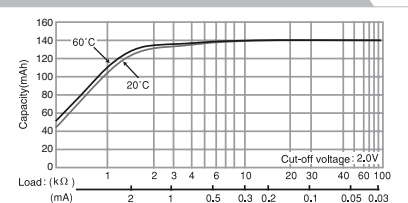
DISCHARGE TEMPERATURE CHARACTERISTICS



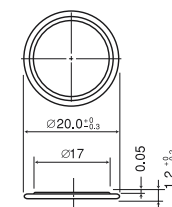
OPERATING VOLTAGE VS. DISCHARGE CURRENT*



CAPACITY VS. LOAD RESISTANCE



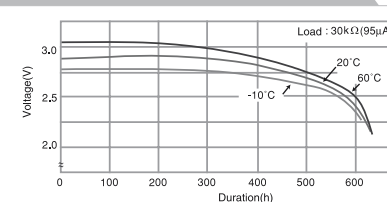
CR-2012



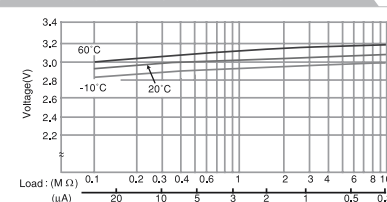
SPECIFICATIONS

Name	CR-2012
Nominal voltage (V)	3
Nominal capacity (mAh)	55
Continuous drain (mA)	0.1
Operating temperature (°C)	-30 to +60
Weight (g)	1.4

DISCHARGE TEMPERATURE CHARACTERISTICS



OPERATING VOLTAGE VS. DISCHARGE CURRENT*



CAPACITY VS. LOAD RESISTANCE

